

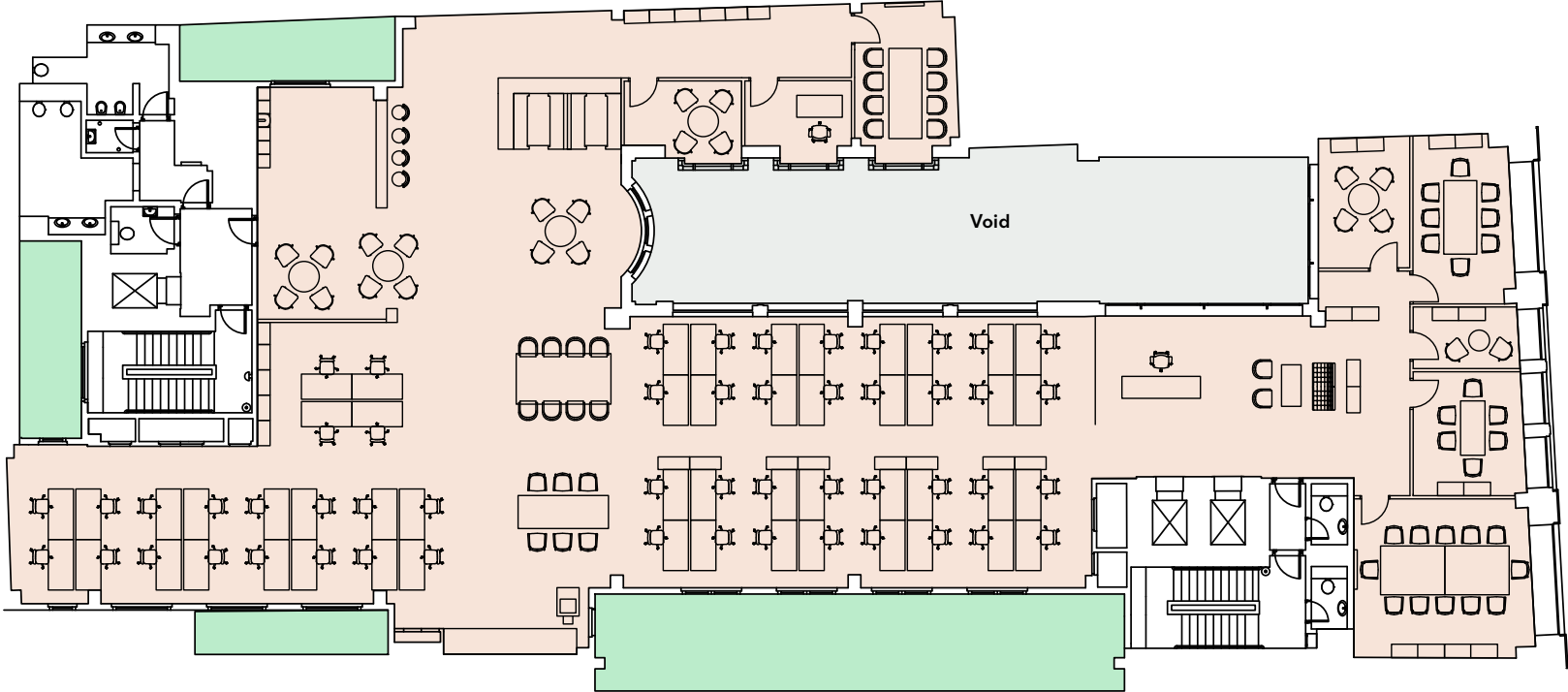
One Crown Court

Cheapside EC2



First Floor

6,042 sq ft / 561 sq m



- Floor
- Terrace
- Core
- Void



54

Workstations



7

Meeting rooms
(5 x FOH, 2 x internal)



1

Teapoint and
breakout area



1

1 person
offices

55

Total headcount



Plans not to scale, for indicative purposes only.

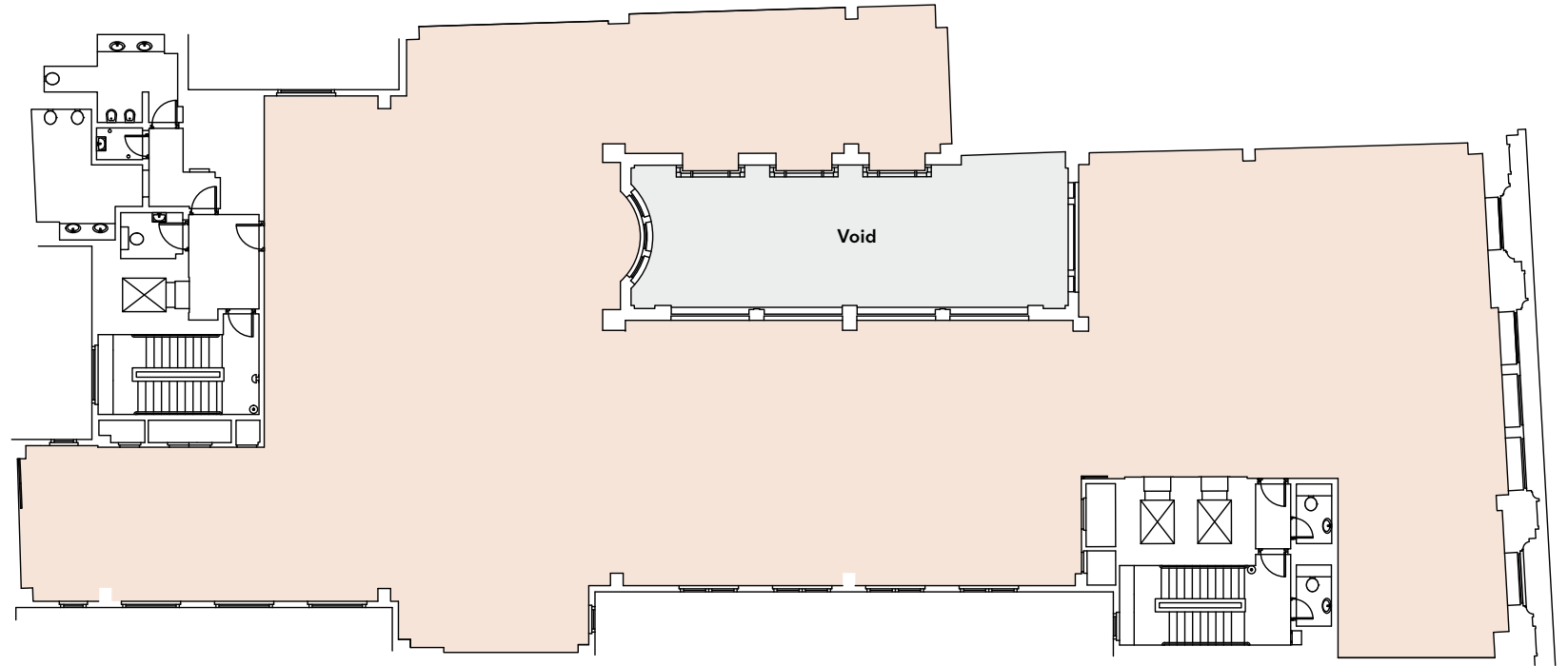
One Crown Court

Cheapside EC2



Second Floor

6,467 sq ft / 601 sq m



- Floor
- Core
- Void



Plans not to scale, for indicative purposes only.

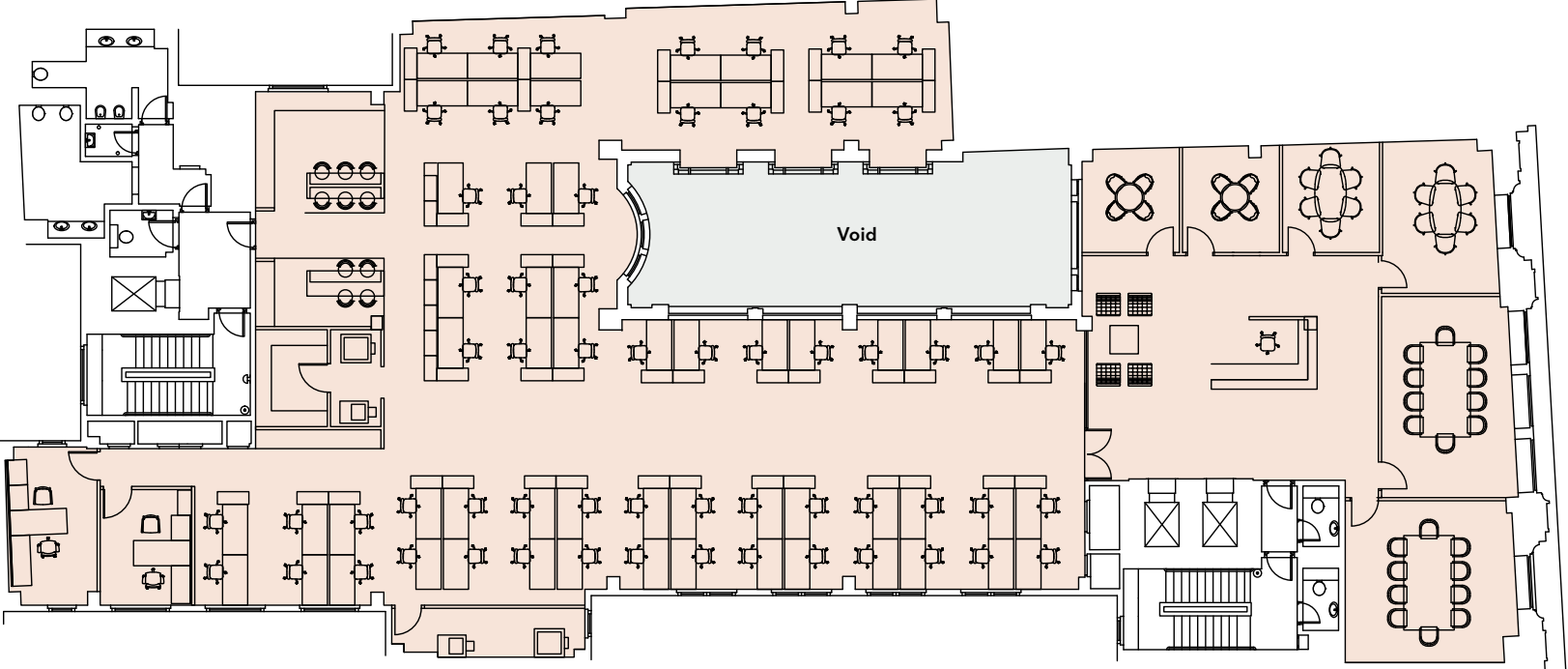
One Crown Court

Cheapside EC2



Second Floor Potential Fit Out

6,467 sq ft / 601 sq m



- Floor
- Core
- Void



61

Workstations



7

Meeting rooms



2

Breakout areas



2

1 person offices

64

Total headcount



Plans not to scale, for indicative purposes only.